

<- Back

Forward ->

Document ID# 742299
2003 Chevrolet Chevy Suburban - 4WD

Print

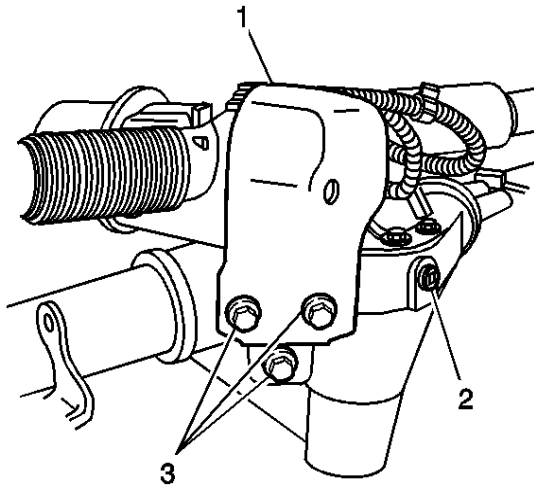
Rear Position Sensor Replacement

Removal Procedure

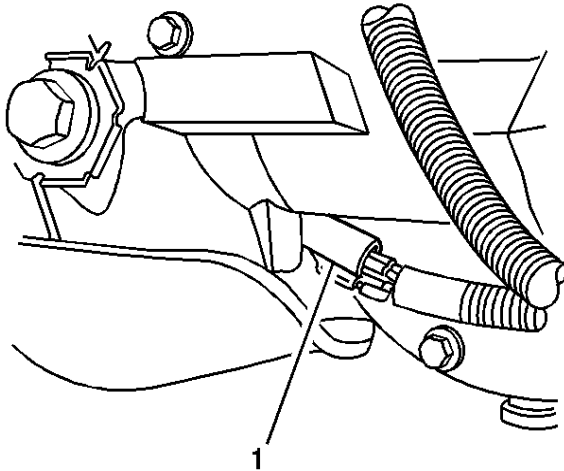
Notice

When lifting the vehicle do not allow the jack to touch the rear steering gear. If the jack touches the rear steering gear you may damage the gear or the rack and pinion boots. If the boots are damaged replace the rack and pinion boot.

1. Raise the vehicle. Refer to [Lifting and Jacking the Vehicle](#) in General Information.



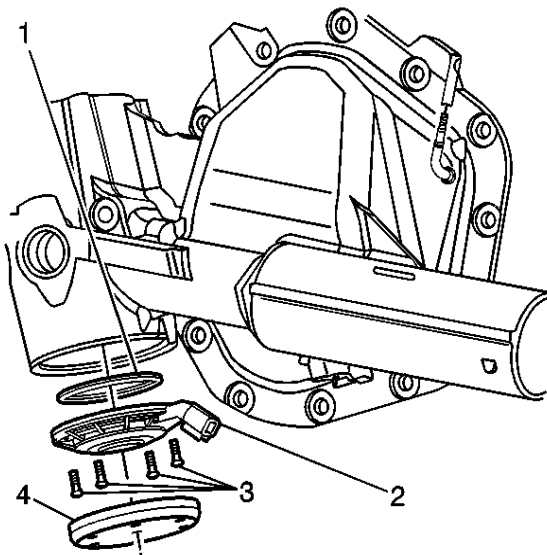
2. Remove the steering gear protection shield (1) retaining bolts (3).



3. Disconnect the electrical connector (1).

Notice

When removing the rear position cover from the steering gear be careful not to damage to the rear position sensor.



4. Remove the rear wheel position sensor cover (4) from the steering gear by prying on the cover using the slot.
5. Remove the rear wheel position sensor retaining bolts (3) .

Important

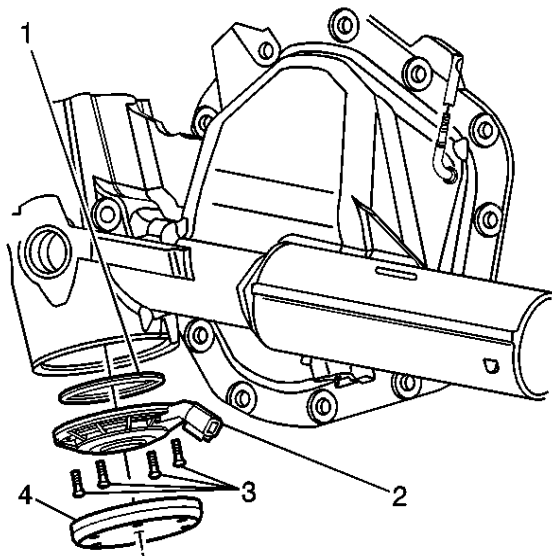
Check the inner tie rod boot for wear or damage.

6. If the boots are damaged replace the steering gear actuator. Refer to [Steering Gear Actuator and Cover Replacement](#) .

Important

Maintain the sensor position. Do not turn the sensor.

7. Remove the rear wheel position sensor (2) from the steering gear.

Installation Procedure**Important**

Make sure the O-ring (1) is installed.

1. Install the rear wheel position sensor (2) to the steering gear.

Important

Be careful to maintain the position of the replacement sensor.

2. Remove the pin retaining the position of the new sensor and immediately install the sensor to the steering gear.

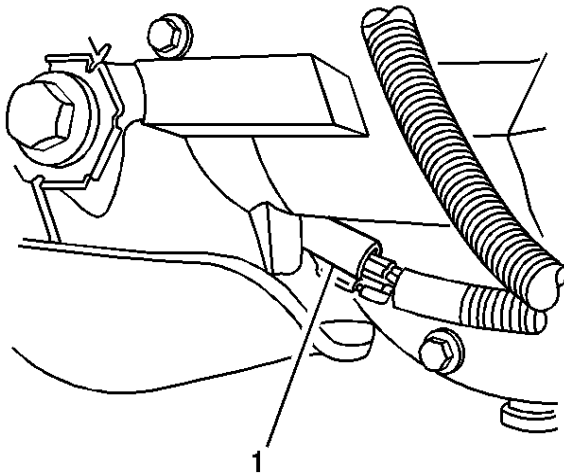
Notice

Use the correct fastener in the correct location. Replacement fasteners must be the correct part number for that application. Fasteners requiring replacement or fasteners requiring the use of thread locking compound or sealant are identified in the service procedure. Do not use paints, lubricants, or corrosion inhibitors on fasteners or fastener joint surfaces unless specified. These coatings affect fastener torque and joint clamping force and may damage the fastener. Use the correct tightening sequence and specifications when installing fasteners in order to avoid damage to parts and systems.

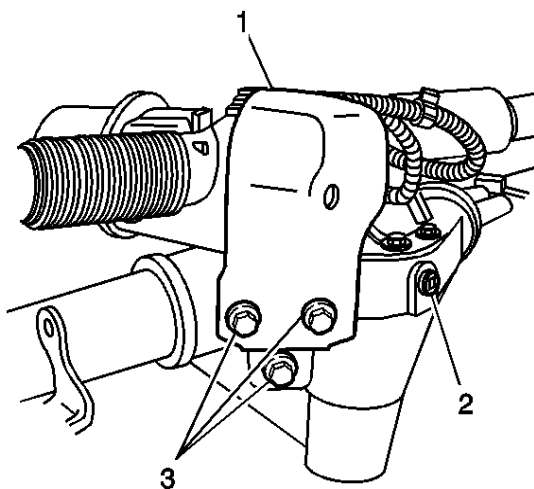
3. Install the rear wheel position sensor retaining bolts. Apply LOCTITE 242 blue. **Tighten**

Tighten the bolts to 4 N·m (35 lb in).

4. Install the rear wheel position sensor cover (4).



5. Connect the electrical connector (1).





6. Install the steering gear protection shield (1) and retaining bolts (3). **Tighten**

Tighten the steering gear protection shield retaining bolts to 180 N·m (132 lb ft).

7. Lower the vehicle.
8. Perform a four wheel alignment. Refer to [Measuring Wheel Alignment](#) in Wheel Alignment.

<- Back

Forward ->

Document ID# 742299
2003 Chevrolet Chevy Suburban - 4WD

Print